



tonymacx86.com

[Home](#) [Buyer's Guide](#) [Installation Guide](#) [Forum](#)
[Guides](#) [Downloads](#) [Rules](#) [Activity](#) Search...[Home](#) [Forums](#) [Post Installation](#) [General Help](#)

An iDiot's Guide To iMessage




Discussion in 'General Help' started by P1LGRIM, Jun 30, 2016.

Tags: [config.plist](#) [guide](#) [help](#) [imessage](#) [tutorial](#)

Page 1 of 37 [1](#) [2](#) [3](#) [4](#) [5](#) [6](#) → [37](#) [Next >](#) [Go to First Unread](#)

[Watch Thread](#)

P1LGRIM
Moderator

Joined: Mar 2, 2012
Messages: 9,573
Mobo: Lenovo ThinkStation p300 ⌘
CPU: Intel i5-4570 3.2 GHz
Graphics: GeForce GT 740 2047 MB
Mac: 
Classic Mac: 
Mobile Phone: 

Jun 30, 2016 at 10:47 PM

#1

An iDiot's Guide To iMessage

Delivered

This is intended as a quick and easy guide to enable the average user to configure for iMessage services.

It is acknowledged that it will not work in all cases but should assist a great many people if only by giving an understanding of the processes involved to enable iMessage.

It is not intended as a help thread, requests for help will be deemed off-topic and removed.

For help with iMessage refer to the comprehensive [How to Fix iMessage](#) Guide

thread.

Links to all of the referenced files are at the end of this first post.

Despite them being at the end of the instructions, now is a good time to download them.

If you have tried and failed previously then there are some steps to take before you start again.

Open Safari and log in to iCloud.com

Click on **Find iPhone**

Click the down arrow next to **All Devices**

If there are spurious devices in the list from previous failed attempts click each one and **Remove from Account.**

You should also remove any unwanted devices from your Apple ID through the link on the iCloud page,
or by directly logging in to your Apple ID page.

Sign Out of iCloud.com

Close Safari

Open System Preferences - iCloud : Click **Sign Out**

Disconnect from the network then Restart

Open a Finder window and click on your User Name then in a blank area right click and select **Show View Options** and from the resulting window select **Show Library Folder.**

Open the newly revealed Library folder and select Caches

From the Caches folder delete all files and folders beginning with :

- com.apple.iCloudHelper
- com.apple.imfoundation.IMRemoteURLConnection
- com.apple.Message

In Finder navigate to

Username/Library/Preferences and delete all files and folders beginning with

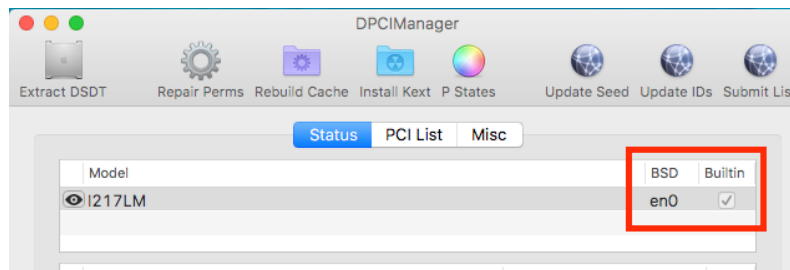
- com.apple.iChat.
- com.apple.icloud.
- com.apple.ids.service
- com.apple.imagent.
- com.apple.imessage.
- com.apple.imservice.

Empty the Trash and Restart.

Start here

It has been said that you must have a credit card registered with your AppleID in order to use iMessage,

I can neither confirm or deny this as I have never tried it without.



You **must** have a working Ethernet connection which is defined as **BuiltIn** and **en0**.

An easy way to determine this is with the DPCIManager app.

It is possible to connect with a Wireless adaptor but you must have working Ethernet which is BuiltIn and en0 too.

This is the most basic fundamental and the one that is overlooked most by laptop users although it is equally valid for desktop users too.

The exception to this is when you have a machine that does not have Ethernet, in this case it is acceptable (with the appropriate SMBIOS) to have the Wireless adaptor as en0 but it **must** be identified as BuiltIn too.

If your Ethernet interface is identified as anything other than en0 you may need to reset your network configuration files.

Open the Terminal application and browse to /Library/Preferences/SystemConfiguration/ then delete these two files :

- NetworkInterfaces.plist
- preferences.plist

Empty the Trash and then Restart.

The next requirement is a correctly configured SMBIOS.

In the interests of simplicity the examples shown will use the CloverConfigurator app but it should be noted that this is not the only (or best) way to achieve the required result.

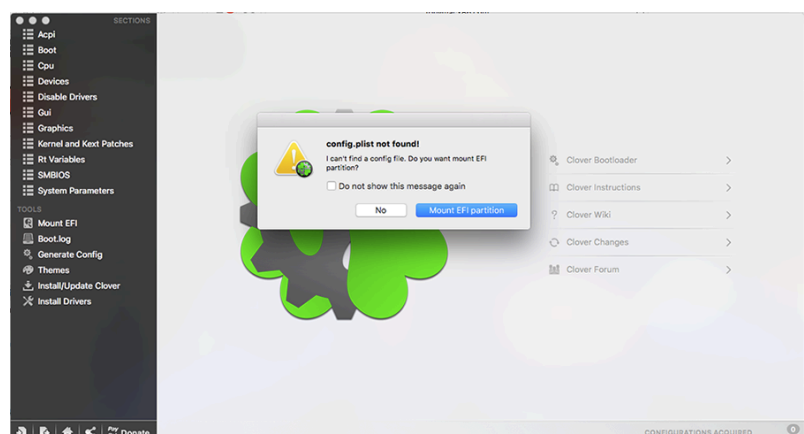
What is certain is that you should **never** edit your config.plist file with a text editor as this can corrupt the formatting. A corrupt config.plist is the same as having no config.plist at all.

You should already have determined the optimum System Definition for your hardware. If you subsequently change your System Definition you must run through the procedure detailed in this guide again.

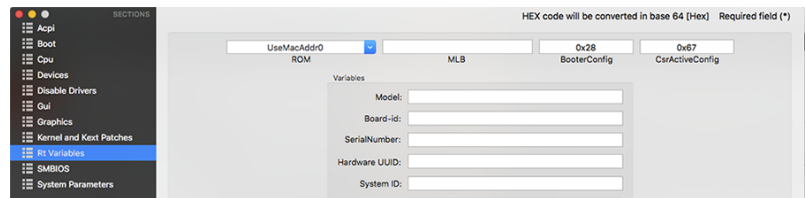
Before starting to configure for iMessage you should ensure that your config.plist is otherwise correctly set up for your specific hardware. The following examples refer only to changes required to your existing config.plist.

It is not suggested that anything not shown in the examples should be removed from your own config.plist unless specifically mentioned.

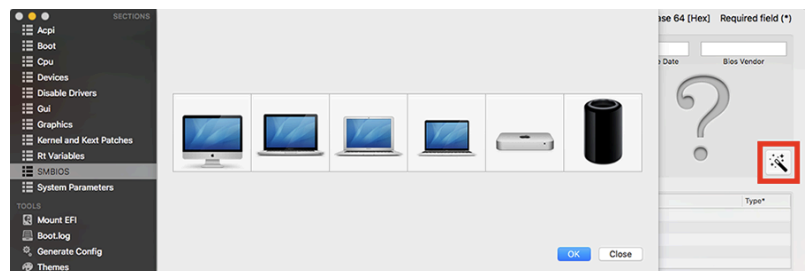
If you haven't already, install CloverConfigurator to your /Applications folder.



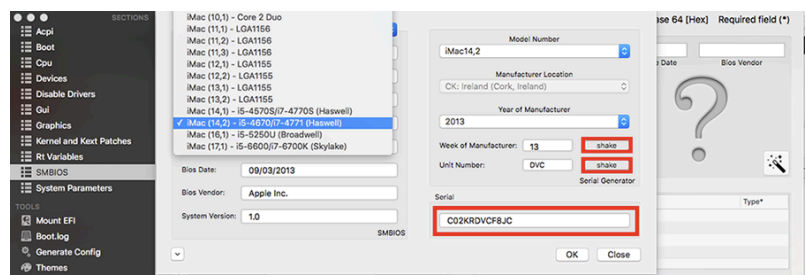
From the /Applications folder run Clover
Configurator
Mount the EFI partition
File - Open - EFI/CLOVER/config.plist



In the left pane select Rt Variables
From the ROM dropdown list select UseMacAddr0
Make sure that the MLB box is empty
Set BooterConfig to 0x28
Set CsrActiveConfig to 0x67



In the left pane select SMBIOS
Click the Magic Wand tool
Click on the picture appropriate for your intended
System Definition.



From the dropdown list, choose the desired System Definition.
Click the shake buttons several times to generate a Serial Number - Click OK.

EveryMac.com
Mac specs, prices, answers & more.

Hosting and bandwidth provided by MacApe.net.

Home | What's New? | Mac Specs | Clones | iPod | iPhone | iPad | Q&As | Identify | Lookup | Compare | Sort | App

Mac, iPod, iPhone & iPad - EveryMac.com's Ultimate Mac Lookup

Lookup Macs, iPods, iPhones and iPads by Apple Order Number, Model Number, EMC Number, Model Identifier, Serial Number and Intel processor number.

Find EveryMac.com useful? Please [Bookmark & Share](#). Please also +1 it:


For a Serial Number lookup, be sure to enter the *entire* serial number.

Need help? See [Mac Identification](#) or [iPod, iPhone & iPad Identification](#). Want to search the entire site in natural language? Use [Site Search](#) instead.

Enter Mac, iPod, iPhone or iPad Identifier:

Keywords=C02KRDVCF8JC

Please perform the following task to retrieve your personalized results.

☐ I'm not a robot 

reCAPTCHA
Privacy - Terms

Site Sponsors

United States:

United Kingdom:

Ireland:

Australia:

Copy the Serial Number and check it on
<http://www.everymac.com/ultimate-mac-lookup/>
Paste the Serial Number into the box and click
Lookup
Prove that you are not a robot

EveryMac.com
Mac specs, prices, answers & more.

Hosting and bandwidth provided by MacApe.net.

Home | What's New? | Mac Specs | Clones | iPod | iPhone | iPad | Q&As | Identify | Lookup | Compare | Sort | App

Mac, iPod, iPhone & iPad - EveryMac.com's Ultimate Mac Lookup

Lookup Macs, iPods, iPhones and iPads by Apple Order Number, Model Number, EMC Number, Model Identifier, Serial Number and Intel processor number.

Find EveryMac.com useful? Please [Bookmark & Share](#). Please also +1 it:

For a Serial Number lookup, be sure to enter the *entire* serial number.

Need help? See [Mac Identification](#) or [iPod, iPhone & iPad Identification](#). Want to search the entire site in natural language? Use [Site Search](#) instead.

Enter Mac, iPod, iPhone or iPad Identifier:

Keywords=C02KRDVCF8JC

No results were found. [Return home](#) or use the Lookup box above to try again.

Most likely, no results were found due to one of the following:

1. A *typo was made*. Please try again, but make sure that all characters are correct. For a Serial Number, **enter the *entire* Serial Number**. You may find it easiest to copy and paste the eleven or twelve character Serial Number into the lookup box. [More info](#).
2. Something *other than a supported identifier was entered*. EveryMac.com supports [Order Numbers](#), [Model Numbers](#), [EMC Numbers](#), [Model Identifiers](#), [Serial Numbers](#), and [Intel processor numbers](#). It **does not support words**. Please try again, but use a supported identifier or instead try [Site Search](#) for language queries.
3. EveryMac.com has *yet to document the identifier you entered*. If a model could not be retrieved by its Serial Number or Order Number, try searching by [Model Number](#) (Example: [A1278](#)), [EMC Number](#) (Example: [2254](#)), or [Model Identifier](#) (Example: [MacBook5,1](#)).

If you can retrieve a Mac or Apple device by one identifier but not another, please [get in touch](#) and share what is missing.

Site Sponsors

United States:

United Kingdom:

Ireland:

Australia:

Southeast Asia:

If you see this response your serial number

is invalid - Go back to the magic wand and generate another one.

EveryMac.com

Mac specs, prices, answers & more.

Home | What's New? | Mac Specs | Clones | iPod | iPhone | iPad | Q&As | Identify | Lookup | Compare | Sort | App

New Additions

macOS Sierra Support >

iOS 10 Support >

Ultimate Mac Lookup 2.0 >

Mac Upgrade FAQs >

Retina MacBook FAQ >

iPhone FAQ >

iPad FAQ >

New MacBook >

Revised MacBook Air >

New iPhone SE >

More in What's New? >

Browse All Macs

Current Macs >

All Macs (By Series) >

Mac, iPod, iPhone & iPad - EveryMac.com's Ultimate Mac Lookup

Lookup Macs, iPods, iPhones and iPads by Apple Order Number, Model Number, EMC Number, Model Identifier, Serial Number and Intel processor number.

Find EveryMac.com useful? Please [Bookmark & Share](#). Please also +1 it:

For a Serial Number lookup, be sure to enter the **entire serial number**.

Need help? See [Mac Identification](#) or [iPod, iPhone & iPad Identification](#). Want to search the entire site in natural language? Use [Site Search](#) instead.

Enter Mac, iPod, iPhone or iPad Identifier:

Keywords=C02KRDVCF8JC

Showing 1 - 2 of 2

This serial number could refer to either "Late 2013" iMac model below. Please independently verify the processor speed of your iMac for precise identification.

[iMac "Core i7" 3.5 27-Inch \(Late 2013\)](#)

3.5 GHz Core i7 (I7-4771)

Intro.	September 24, 2013	Disc.	May 19, 2015
Order	MF125LL/A	Model	A1419 (EMC 2639)
Family	Late 2013	ID	iMac14,2
RAM	8 GB	VRAM	2 GB
Storage	1 TB* (7200 RPM)	Optical	None*

[Complete iMac "Core i7" 3.5 27-Inch \(Late 2013\) Specs](#)

Site Sponsors

United States:

United Kingdom:

Ireland:

Australia:

Southeast Asia:

If you see a response similar to this it means that you have generated a serial number in a recognisable format and it is ok to proceed to the next stage.

Check Your Service and Support Coverage

Review your Apple warranty status and eligibility to purchase additional coverage.

Enter your hardware serial number

C02KRDVCF8JC

[See how to find your serial number >](#)

Please enter the code



ovf1e

[Refresh code](#)

[Vision impaired](#)

Continue

Open the <https://checkcoverage.apple.com> site
and paste your Serial Number into the box
Enter the required code and click Continue

Your Service and Support Coverage



OBS MacBook Pro (15-inch Late 2008)

Serial Number:

[Check another serial number >](#)

This is the part of the process which confuses
people the most so pay particular attention :

If you see the message "Your Service and
Support Coverage" and a picture of a computer
then you have generated the Serial Number of a
computer that is already recorded in Apple's
database.

Do not use this Serial Number - Go back to the
Magic Wand tool and generate a new one.

Check Your Service and Support Coverage

Review your Apple warranty status and eligibility to purchase additional
coverage.

Enter your hardware serial number

We're sorry, but this serial number is not valid. Please
check your information and try again.

[See how to find your serial number >](#)

If you see the message "**We're sorry, but this**

serial number is not valid. Please check your information and try again" and the Serial Number has passed verification at everymac.com then it is OK to use this Serial Number for your config.plist.

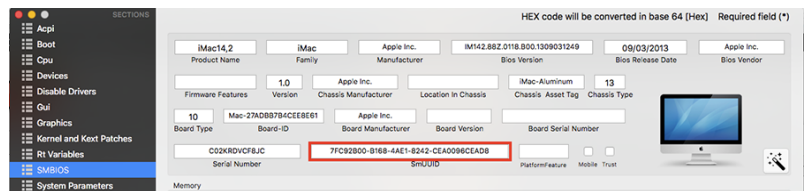
This is so important that it is worth repeating : You need a Serial Number that everymac.com confirms is in the correct format and that Apple says is not valid.

It does not mean that it is not a valid Serial Number - It means that it is not already registered.

Quit Safari

```
Last login: Thu Jun 30 12:33:37 on console
MacBook-Pro:~ P1LGRIM$ uuidgen
721F7B4F-9821-40D1-BAB2-912E659C75EB
MacBook-Pro:~ P1LGRIM$ uuidgen
B5D806E3-6EA0-4AC9-9098-D9279AC32DB4
MacBook-Pro:~ P1LGRIM$ uuidgen
B162D2DE-8150-4676-9BF9-CBF9572B4A87
MacBook-Pro:~ P1LGRIM$ uuidgen
3C5C8012-2973-44ED-B0D2-E362EB303B24
MacBook-Pro:~ P1LGRIM$ uuidgen
BBD7079E-78FE-40DA-98F4-5765D40AEB83
MacBook-Pro:~ P1LGRIM$ uuidgen
43BE7980-8168-4512-A70F-DCBB13CAE776
MacBook-Pro:~ P1LGRIM$ uuidgen
81182480-E004-44D2-A6EE-03A78B786CB6
MacBook-Pro:~ P1LGRIM$ uuidgen
026CE7C0-F6B4-4707-AA12-1787D094C2F8
MacBook-Pro:~ P1LGRIM$
```

Open a Terminal window and type uuidgen (and press Return) several times to generate some random UUIDs.



Copy one of your random UUID numbers from the Terminal window and paste it into the SmUUID box in Clover Configurator.

In Clover Configurator select File - Save
Quit Clover Configurator.

Restart

From your /Applications folder run Clover Configurator,

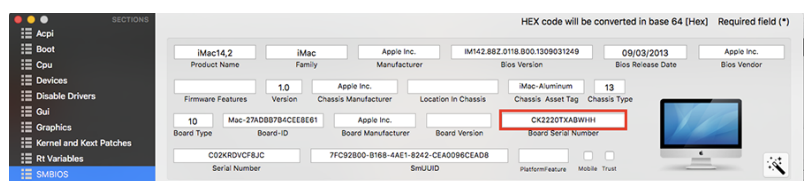
Mount the EFI partition.

Select File - Open - EFI/CLOVER/config.plist

Once your config.plist file has loaded into Clover Configurator :

Open a Terminal window

Open a Finder window and browse to the location where you downloaded simpleMLB.sh
Drag simpleMLB.sh from Finder onto the Terminal window, click inside the Terminal window and press Return



Copy the generated number then paste it into

Clover Configurator - SMBIOS - Board Serial Number.

In Clover Configurator select File - Save

Quit Clover Configurator and Terminal.

Restart

Open a Finder window, browse to the location where you downloaded iMessageDebug and run it.

Press y and Return to save a copy called iMessageDebug.txt.

Restart

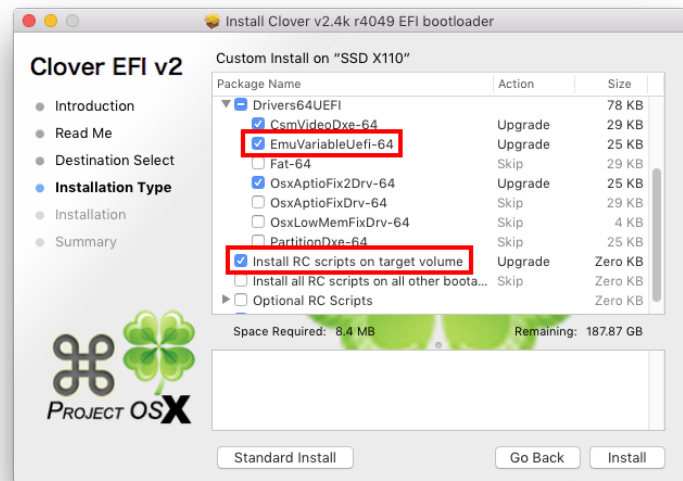
Open a Finder window and browse to the location where you downloaded iMessageDebug and run it.

Compare the output with the saved copy.

If the two copies are the same you may reconnect to the network and proceed to set up iMessage.

The last line in the output of iMessageDebug is subject to change but does not appear to be a cause for concern.

If you follow the guide and get a failed ROM in iMessageDebug you may need to install EmuVariableUefi-64 and RC Scripts with the Clover installer. This seems to particularly apply to those with 100 series motherboards.



The examples shown are for the Clover boot loader that has been installed in UEFI mode. If you have installed Clover in Legacy mode then the procedure is the same except that your config.plist is located in the /EFI/CLOVER folder on your System disk.

For brevity the guide is for users of El Capitan as this is the operating system that most people will be using at the time of writing. If you use a different version of the operating system then you should adapt these instructions to your own requirements.

This is not intended as a help thread, requests for help will be deemed off-topic and removed. For help with iMessage refer to the comprehensive [How to Fix iMessage](#) Guide thread.

[simpleMLB](#) - [DPCIManager](#)

joseph0042, hut2016, IcePiq and 52 others like this.

Last edited: May 1, 2017

[ThriftyMac](#) ⌘: HP dc7900 CMT - Q8200 - GT 710

[ThinkServer](#) ⌘: Lenovo TS140 - Xeon E3-1245 v3 - NVIDIA GeForce GT 740

[Qx-2000](#) ⌘: GA-B85M-DS3H-A - i3-4330 - GeForce GT 640

Like

+ Quote

Reply



P1LGRIM

Moderator

Joined: Mar 2, 2012

Messages: 9,573

Mobo: Lenovo ThinkStation p300 ⌘

CPU: Intel i5-4570 3.2 GHz

Graphics: GeForce GT 740 2047 MB

Mac:  

Classic Mac: 

Mobile Phone: 

Jul 1, 2016 at 12:02 AM

#2

powerpcg5 said: ↑

What if the check coverage says

We're sorry, but we are unable to complete your request at this time. Please try again later.

This is not intended as a help thread, requests for help will be deemed off-topic and removed. For help with iMessage refer to the comprehensive **How to Fix iMessage**

hacklapomme and ScoRp323 like this.

[ThriftyMac](#) ⌘: HP dc7900 CMT - Q8200 - GT 710

[ThinkServer](#) ⌘: Lenovo TS140 - Xeon E3-1245 v3 - NVIDIA GeForce GT 740

[Qx-2000](#) ⌘: GA-B85M-DS3H-A - i3-4330 - GeForce GT 640